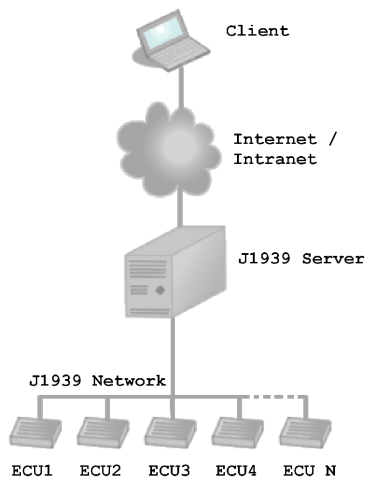


J1939server

Overview

With the J1939server of *port* it is possible to get access to SAE J1939 network, maybe for diagnosis purposes. Therefore the J1939server provides a TCP/IP interface, which the connected client uses to exchange messages with other ECUs in the network. Instead the TCP/IP interface, the usage of the command line is possible too.



Features

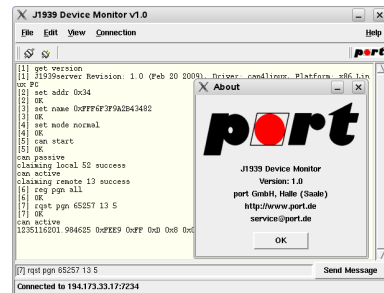
The J1939server offers a lot of useful features, e.g.:

- Client communication using simple commands composed of ASCII strings
- Transmission and reception of application messages
- Message filtering, based on message number (PGN)
- Timestamp generation on message reception
- "Normal" and "listen only" operation mode
- Configurable node address and name
- Support of J1939 Transport Protocol (TP) for up to 1785 Byte per message
- "Address Claiming" for dynamic address assignment

Application

Based on the J1939server, powerful GUI applications for network maintenance and diagnostic can be built using the simple communication interface.

port provides its sample application, the J1939 Device Monitor - JDM, for free of charge.



CAN-Interfaces

The usage of the J1939server requires a CAN interface. A lot of hardware platforms are available, such as PCI cards, USB modules or standalone solutions like EtherCAN of *port*, IGW900 of SSV or the Beck IPC@Chip technologie.



EtherCAN IGW900 CPC-USB Beck IPC@Chip

Ordering Information

0252/10	J1939server EMS CPC can interfaces (1)
0252/11	J1939server Janz CB-USB (1)
0252/12	J1939server Beck IPC@Chip ®
0252/20	J1939server can4linux compatible hardware (2)
0252/21	J1939server EtherCAN (standalone gateway)
0252/22	J1939server IGW900 (standalone gateway) (3)
0258/10	J1939 Device Monitor Windows™
0258/20	J1939 Device Monitor LINUX™

(1) requires Windows™ OS

(2) requires LINUX™ OS

(3) v1.0 doesn't support Address Claiming

Engineering Services

port is providing engineering services and trainings for our business activities:

- CAN and CAN-based protocols: CANopen, J1939, DeviceNet
- Industrial Ethernet Protocols: POWERLINK, EtherNet/IP, EtherCAT
- Implementation of devices according to CANopen device profiles
- VHDL based solutions for industrial applications
- application specific implementations or enhancements
- embedded LINUX projects

Notice

Brands and product names are trademarks or registered trademarks of their respective companies. The product will be continuously improved. *port* therefore reserves the right to change technical properties at any time without appointment.



port GmbH
Regensburger Straße 7b
D-06132 Halle/Saale
+49 345 777 55 0
service@port.de